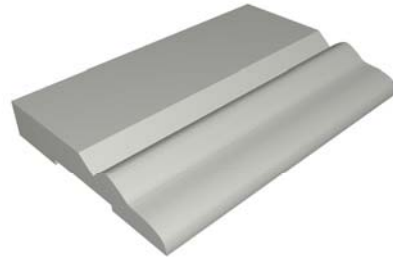
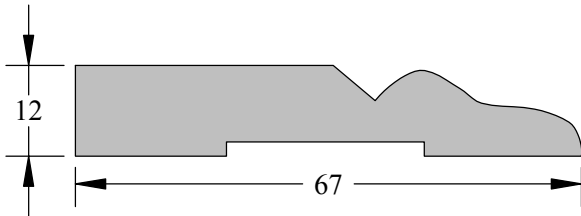
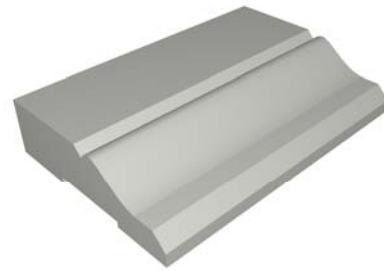
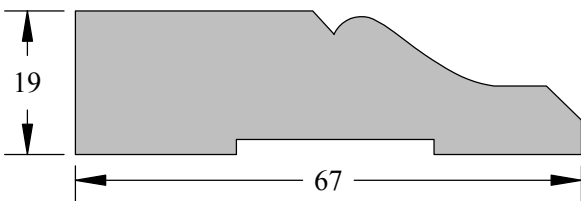


Mouldings 1

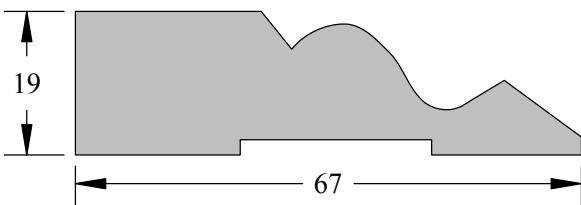
Colonial 67 × 12 fin (also 45 × 12)



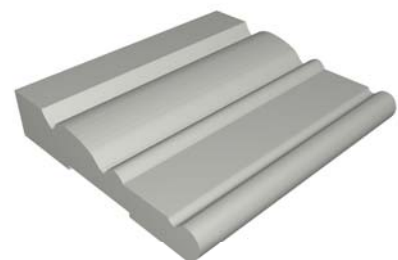
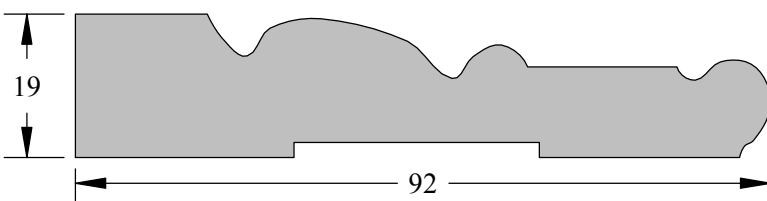
Colonial 67 × 19 fin (also 92 × 19, 118 × 19, 142 × 19)



Perkin's 67 × 19 fin

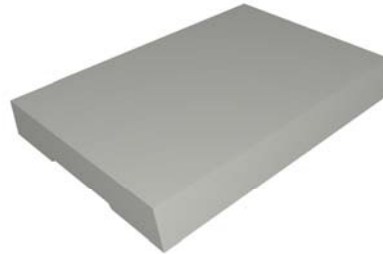
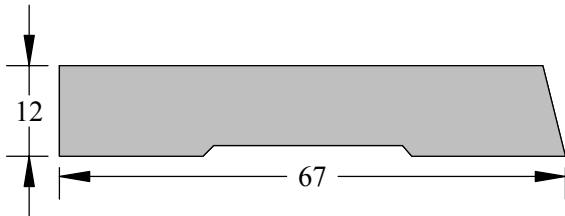


Ornate 92 × 19 fin

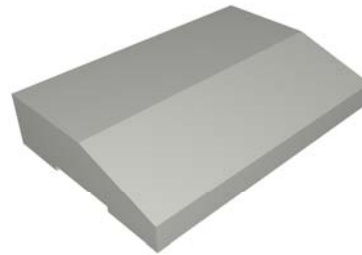
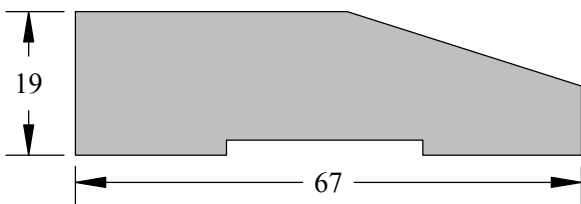


Mouldings 2

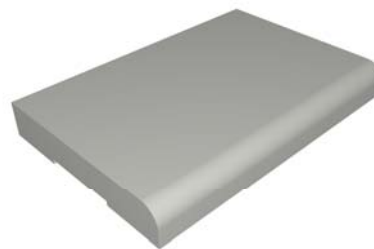
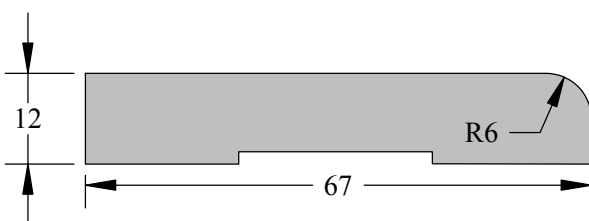
Bevel 67 × 12 fin (also 45 × 12)



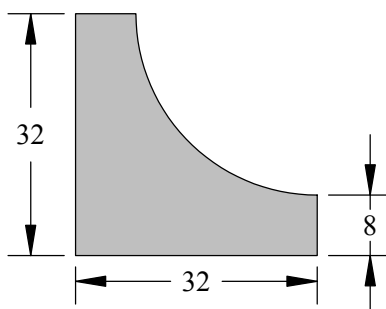
Splay 67 × 19 fin (also 92 × 19, 118 × 19, 142 × 19)



Bullnose 67 × 12 fin (also 45 × 12)

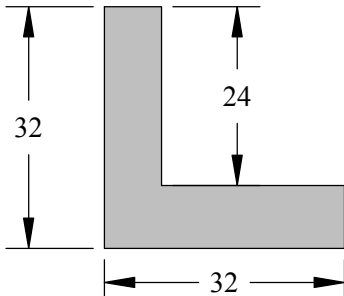


Scotia 32 × 32 fin (also 19 × 19)

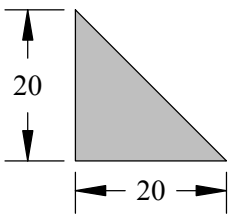


Mouldings 3

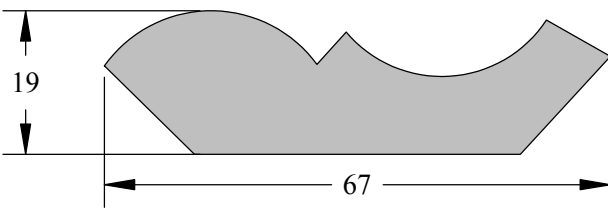
External Corner 32 × 32 fin (also 42 × 42)



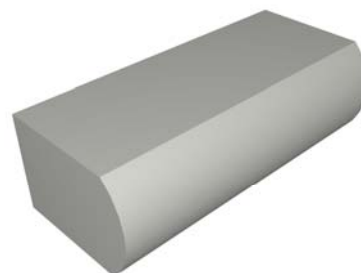
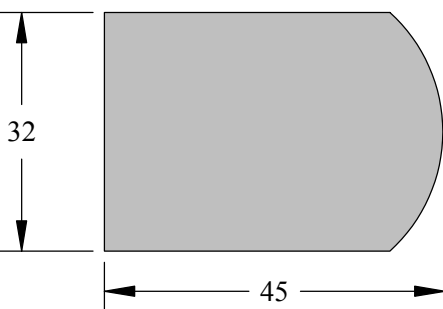
Fillet Mould 20 × 20 fin



No 2 Cornice 67 × 19 fin

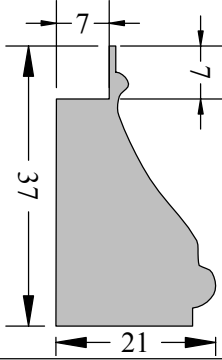


Window Nosing 45 × 32 fin

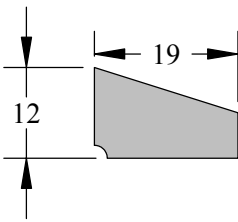


Mouldings 4

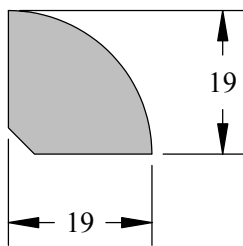
Picture Frame



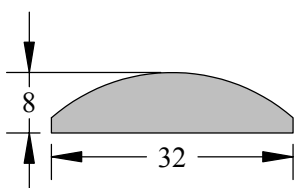
Glazing Bead



Quadrant 19 × 19 fin (also 32 × 32, 12 × 12)

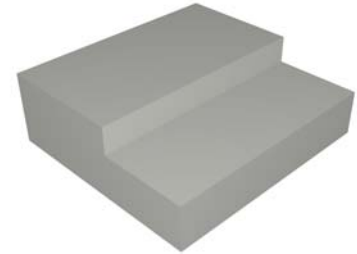
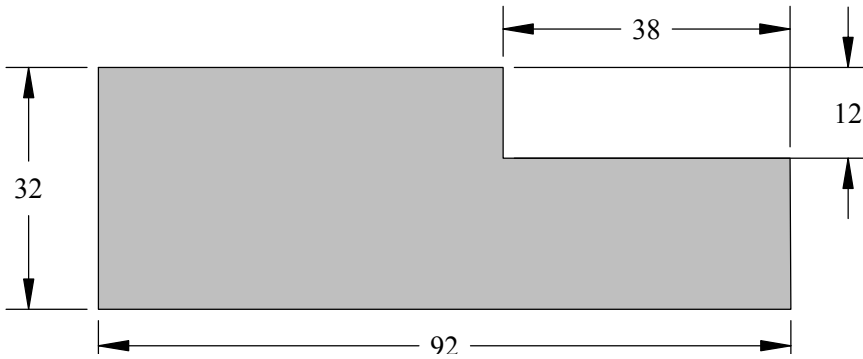


D mould 32 × 8 fin (also 19 × 6, 12 × 4)

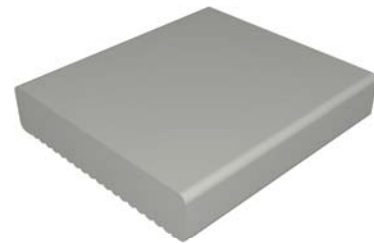
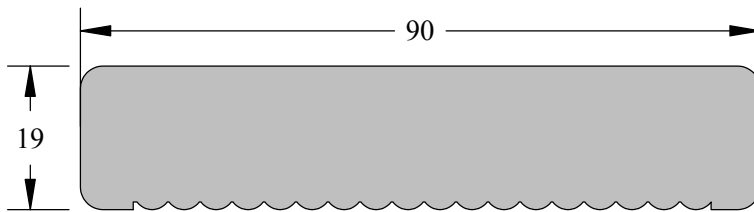


Mouldings 5

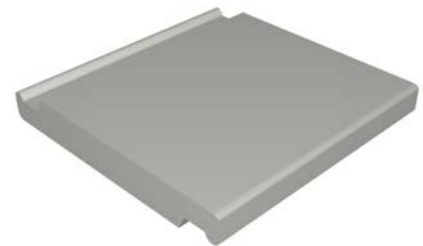
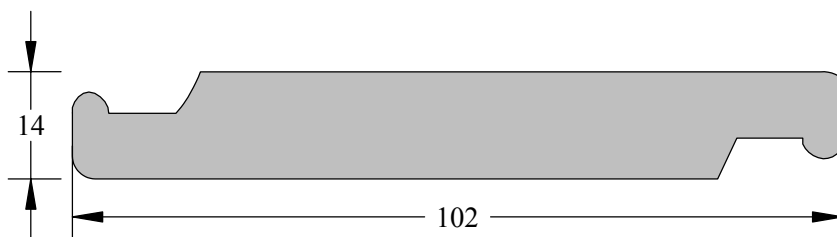
Rebated Door Jamb 92 × 32 fin (also 112, 140)



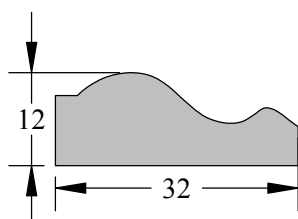
Decking 90 × 19 fin



Breezeway Blade with tenoned ends 102 × 14 fin (also 152 × 14)

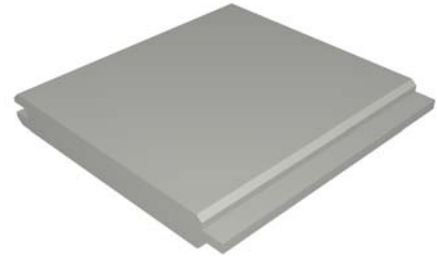
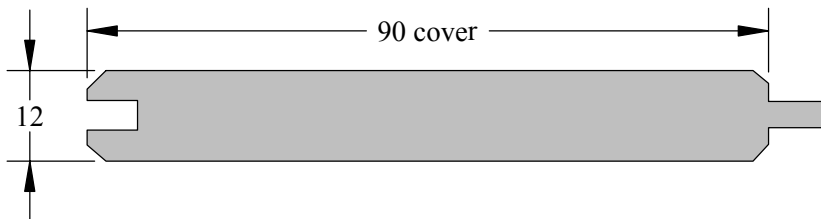


Bed mould 32 × 12 fin

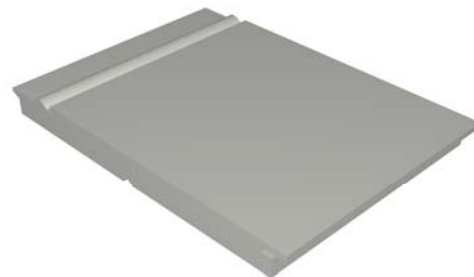
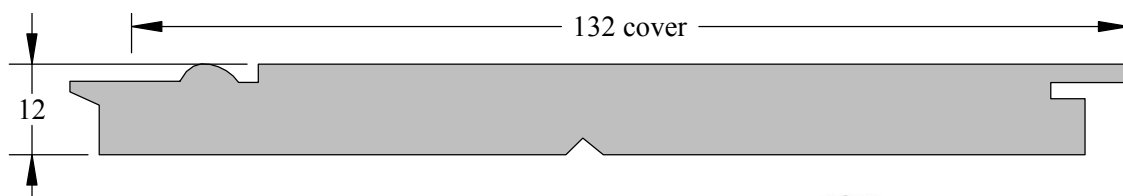


Lining Boards

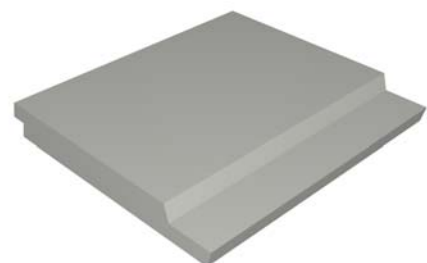
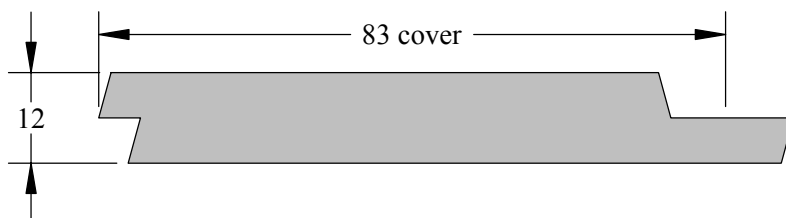
T+G VJ Lining Board 90 cover (also 140 cover)



Regency Lining Board 132 cover

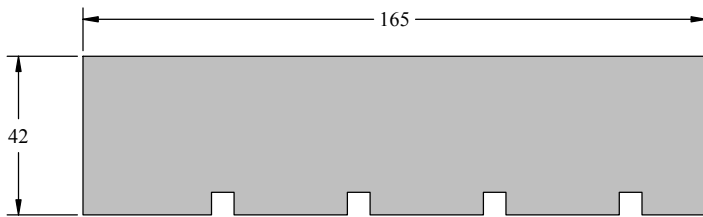


Shiplap Lining Board 83 cover (also 132 cover)

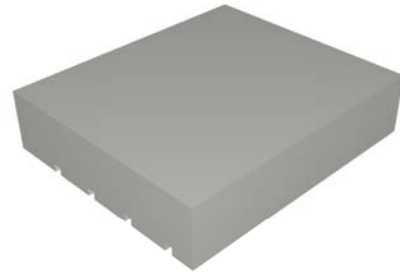


Sills

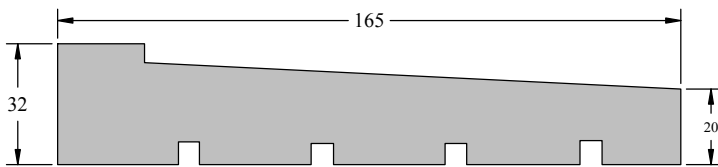
Blank Sill 165 × 42 fin



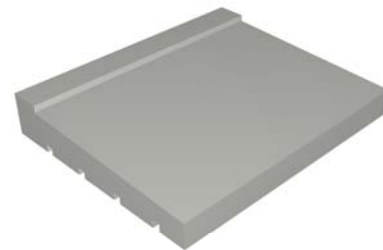
SCALE 1 : 2



Door Sill 165 × 32 fin

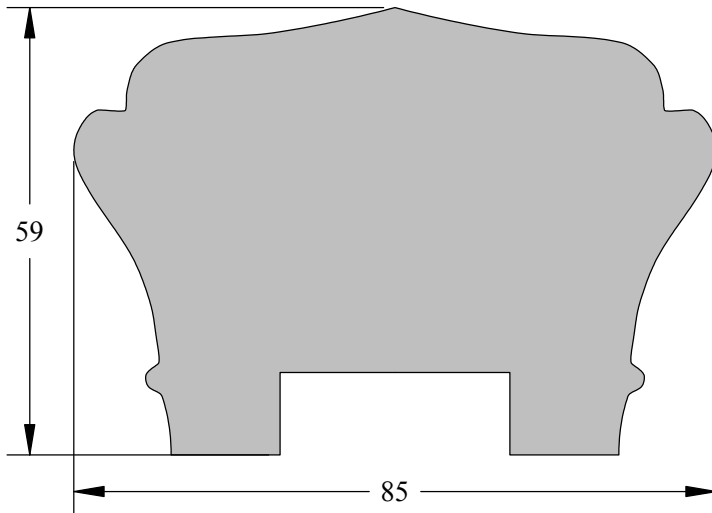


SCALE 1 : 2

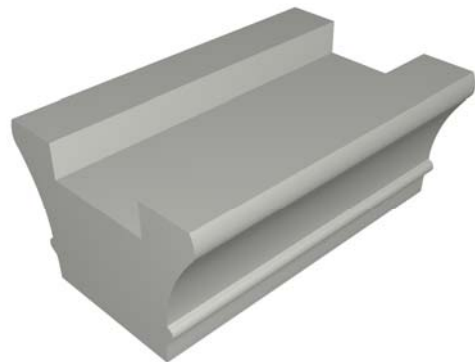
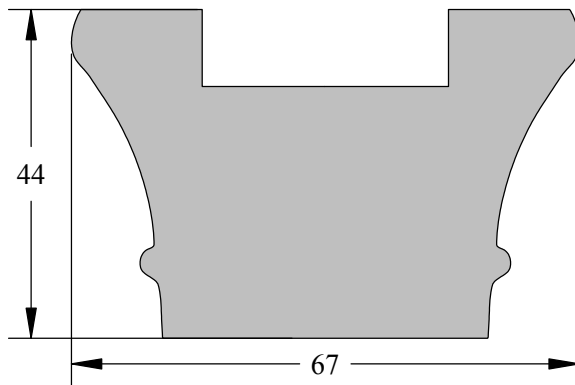


Handrails 1

Handrail 85 × 59 fin

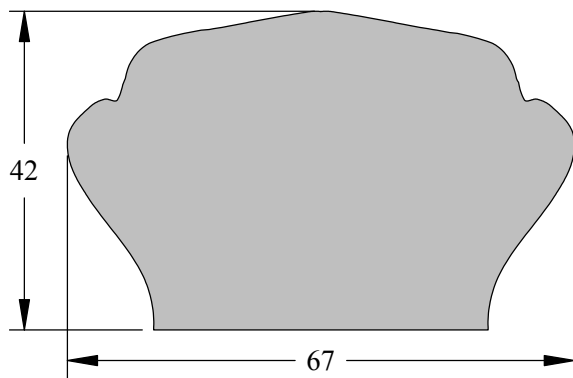


Bottom Handrail 67 × 44 fin

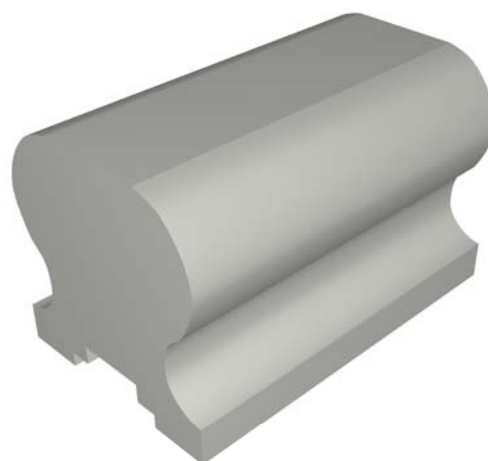
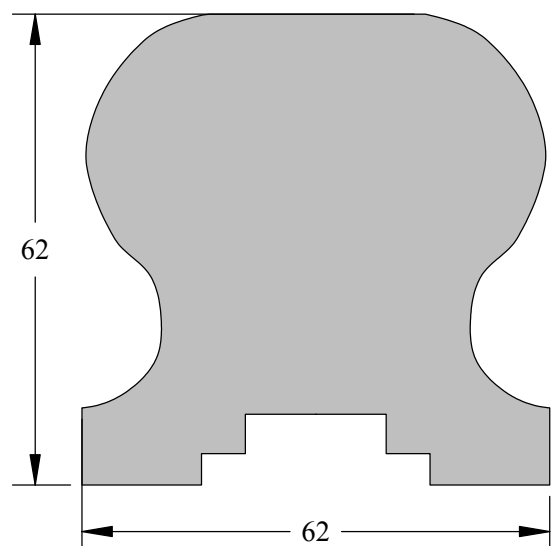


Handrails 2

Handrail 67 × 42 fin



Handrail 62 × 62 fin



Mopstick 64 × 44 fin

